

# EPEC

Eastern  
Pacific  
Engineering  
Construction



# Contents

1. Message from the Leadership
2. Diversity,Equity, and Inclusion
3. History Highlights
4. Global Presence of the Company
5. Our Mission
6. What do We do?
7. Why only us?
8. BMI
9. Major Partners
10. Major Projects

# Message from the Leadership

My passion is bringing our clients' construction visions to life and turning them into tangible investments. From manufacturing materials to designing and building complex projects, Eastern is committed to innovation and excellence with integrity, teamwork, and proactive planning as our foundation. Our story is about the outstanding results that come from hard work, bold vision, and perseverance. We approach each project with a single-minded focus to fulfill our commitment and exceed expectations.

“Together, We make it happen”

**Peter Kim**

Vice Chairman of Eastern / Founder



# Diversity, Equity, and Inclusion

## IT IS TIME TO CLOSE THE GAP BETWEEN WHAT WE SAY AND WHAT WE DO; THEREFORE, AT EASTERN WE ARE COMMITTED TO:

Leadership Commitment & Accountability - Our leaders have brought DE&I to the forefront of executive leadership conversations. They are visible and voluntary allies of an inclusive culture; consequently, workers draw strength from leadership's support and feel safe to reveal their authentic selves.

Diversifying and Equalizing - Critical to creating a more inclusive culture is having a diverse workforce. We seek to increase the diversity of our team and representation of minority groups through recruitment, retention, and promotion. Consistent implementation of fair practices will ensure equal paths to advancement and equal representation at every level.

Supplier Diversity - We recognize that our minority-owned status has afforded us opportunities, and we want to pay that forward by partnering with and ensuring representation of minority- and women-owned businesses. Through outreach, Eastern has established teaming relationships with underrepresented firms, thereby offering opportunity and advancement to minority- and women-owned small businesses.

### Equity

Everyone receives the support they need to be successful

### Diversity

Leverages our unique attributes and perspectives

### Inclusion

Through our interactions, everyone is fully respected, recognized, and valued

# History Highlights

As an affiliate of Eastern, we will inherit and develop the corporate values and spirit of Eastern, and do our best to win the trust and confidence of our customers through challenge and passion.

## Entrepreneurship and Growth

- 1998** Established Eastern Corp. Office in North Carolina  
Eastern Announces Peter Kim as Founder and CEO
- 2017** Established Eastern Office in Georgia
- 2013** Named Top U.S. Metal Roofer (Metal Construction)
- 2014** Named Top U.S. Metal Roofer (Metal Construction)
- 2015** Augusta Regional Airport  
Fedex Distribution Center

## Expansion and Sustainability

- 2015** Truist Park – Home of the Atlanta Braves  
Established Eastern Office in Virginia
- 2017** Continental Tire MS Manufacturing Facility  
Disney Theme Park "Guardians of The Galaxy"
- 2018** NCG Social Circle Facebook Data Center  
The Highline in Washington D.C.  
NASA Research Development Facility  
Old Dominion VA Power  
Valley Health Warren Memorial Hospital

## Innovation Breakthrough

- 2018** Eastern is Established in Seoul, South Korea  
Hyundai Motor Manufacturing Alabama Plant 3
- 2019** SK Battery America Phase I (1st EV battery plant in GA)
- 2013** Eastern Relocates Corporate Office to Suwanee, GA
- 2021** Indiana University Medical Office Building
- 2022** Established Eastern Power Solution in American Samoa
- 2023** JaeWon Chemical Plan in Indiana
- Established Eastern Pacific Engineering & Construction in Guam

# Global Presence of the Company



# Our Mission

## Why EPEC ?

### COE

We are experts in performing accurate and safe construction in accordance with COE specifications and drawings with long-team construction experience and accumulated know-how for US military construction.

### Accumulated

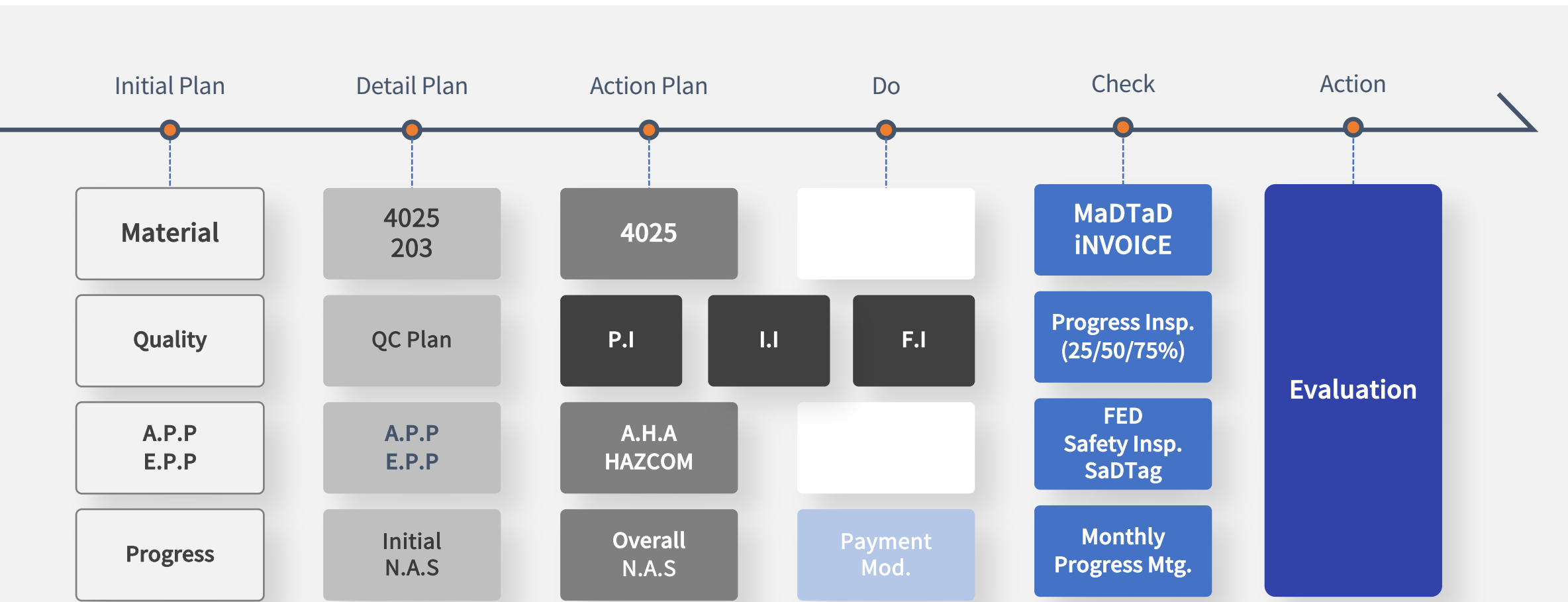
We have a number of construction records for overall construction work, including US military construction and related mechanical equipment work, and we have accumulated technology for engineering as well as construction.

### BIM

Through BIM work, we calculate the exact quantity and identify the movement line between each process to ensure that there are no problems in construction and to suggest the optimal construction method.

# Our Mission

Expert on U.S. Military Base Construction



05.  
Our  
Mission

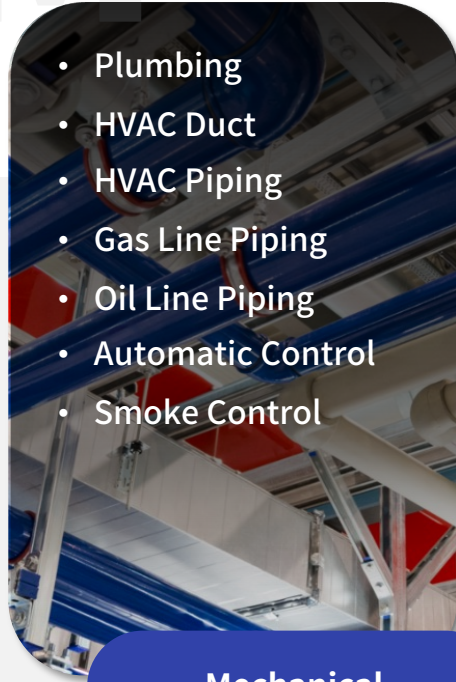


# What do We do?

## Main work

We perform the main and secondary processes as blow.

M F E L



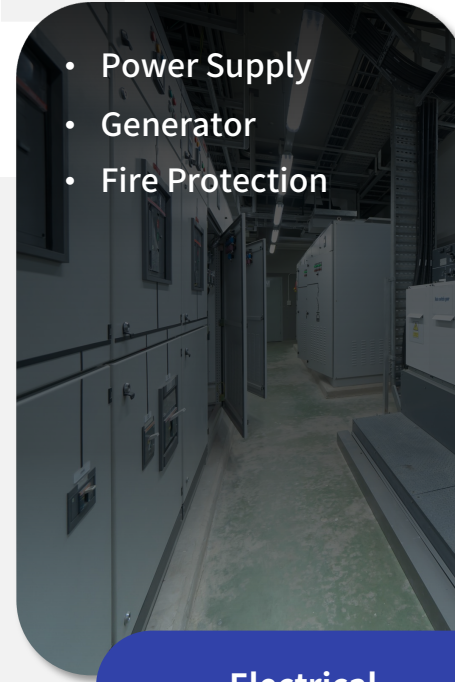
- Plumbing
- HVAC Duct
- HVAC Piping
- Gas Line Piping
- Oil Line Piping
- Automatic Control
- Smoke Control

Mechanical



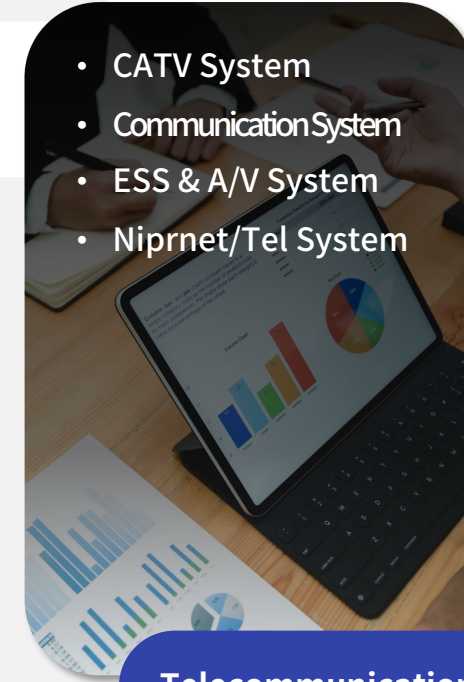
- Fire Alarm
- Sprinkler Piping

Fire Protection



- Power Supply
- Generator
- Fire Protection

Electrical



- CATV System
- Communication System
- ESS & A/V System
- Niprnet/Tel System

Telecommunications

# What do We do?

## Side work

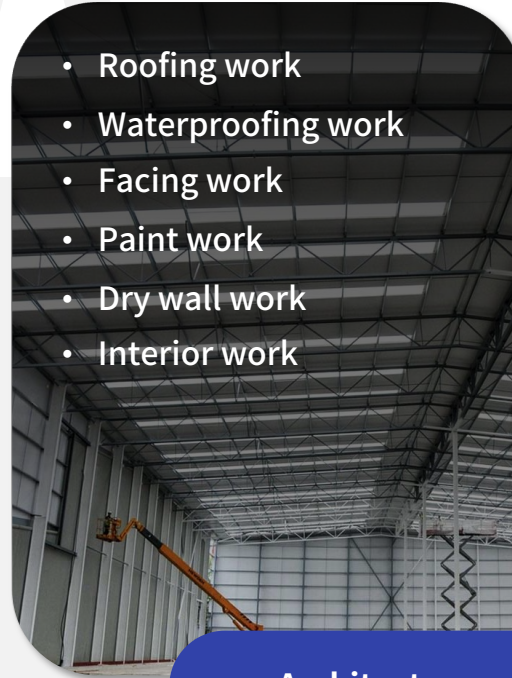
We perform the main and secondary processes as blow.

S A P



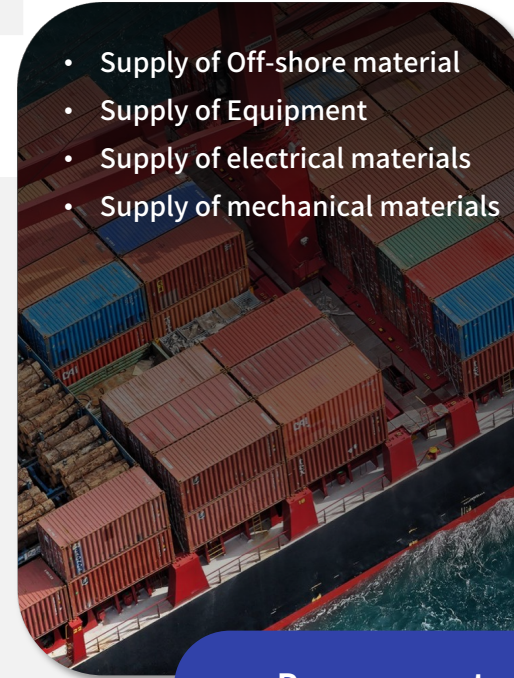
- Form work
- Reinforcement work
- Scaffold work
- Steel Structure work

Structure



- Roofing work
- Waterproofing work
- Facing work
- Paint work
- Dry wall work
- Interior work

Architecture

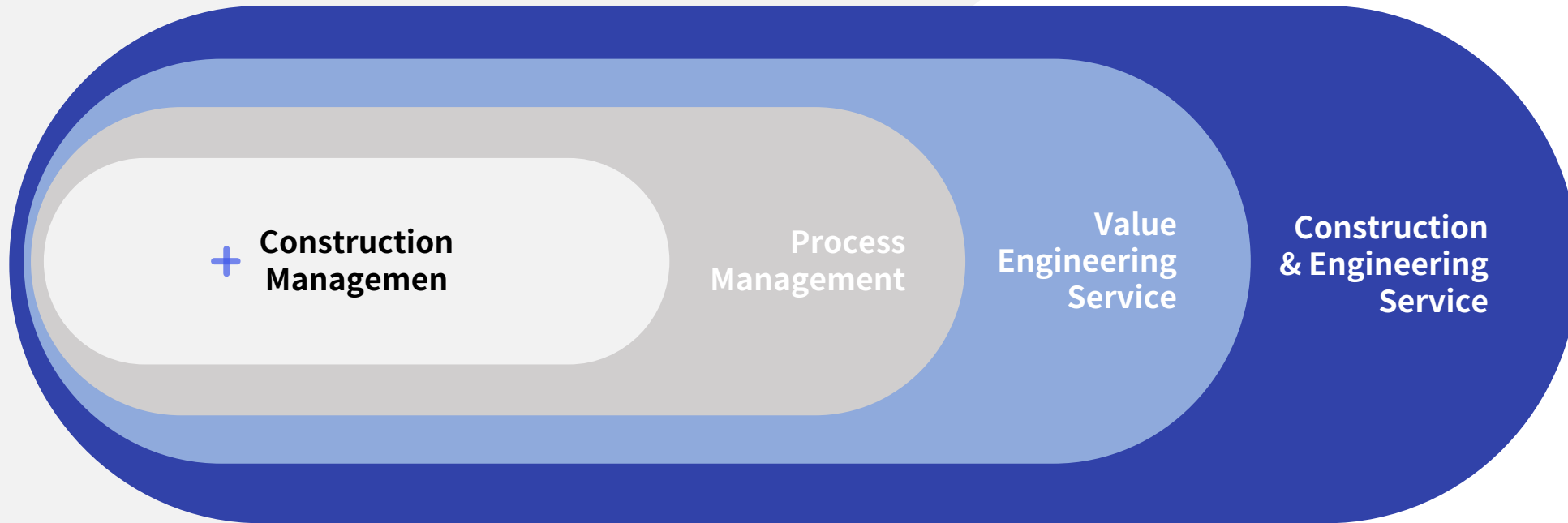


- Supply of Off-shore material
- Supply of Equipment
- Supply of electrical materials
- Supply of mechanical materials

Procurement

# Why only us?

We are not a team that performs simple processes at the construction site, but a group of experts composed of construction and engineering teams based on construction management. Based in the parent company, Eastern Contractor Corporation. We can also propose technology and process management techniques through the experience of numerous projects related to the US military construction. In addition, cost reduction and efficient construction through design VE and construction VE provide the optimal technology and quality that customers want by eliminating the risk of construction work

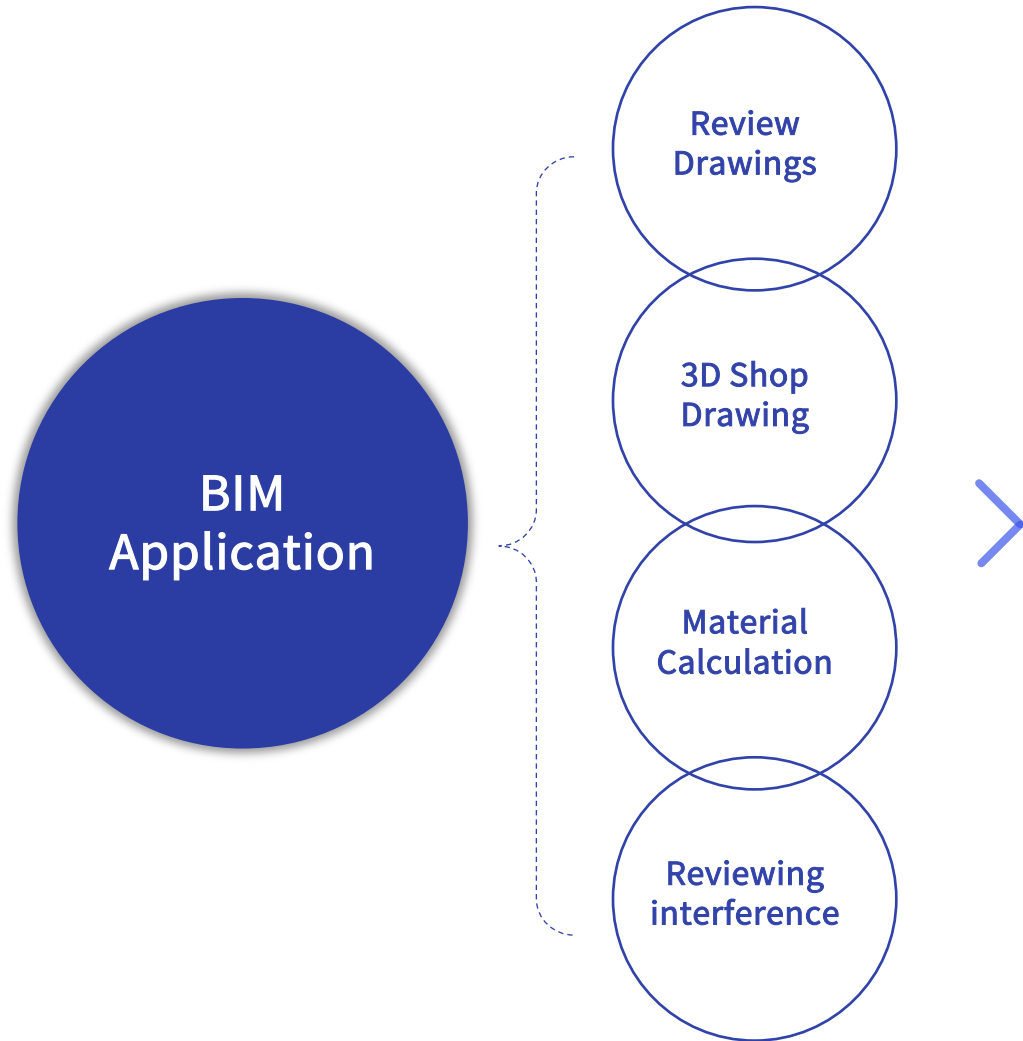


# Why only us?

EPEC coordinates the specialties of the EASTERN Family of companies to provide efficient material delivery and construction techniques, resulting in fast and responsible construction



# Construction using BIM



**BIM** is utilized extensively in the construction industry as a collaborative digital tool for planning, designing, constructing, and managing building projects.

## Communication

Communicating with stakeholders is simpler and can help speed up decision-making about the project.

## Efficiency

With the improved workflow that BIM processes deliver, large-scale projects are more efficient. It's often possible to reduce the life cycle of a project because many aspects are faster and simpler.

## Opportunity

As BIM is helpful for predicting project outcomes, it can open a variety of opportunities.

## Risk Management

Analyzing a BIM ecosystem for hazards and risks before they become problematic helps to make construction sites safer.

## Cost

BIM allows thorough cost analysis across a project. Reliable estimates for materials, shipping, and labor are made well before the construction stage begins.

## Results

Improvements to communications, cost, risk management, and maximizing opportunities all contribute to better overall results.

# Specs & Materials

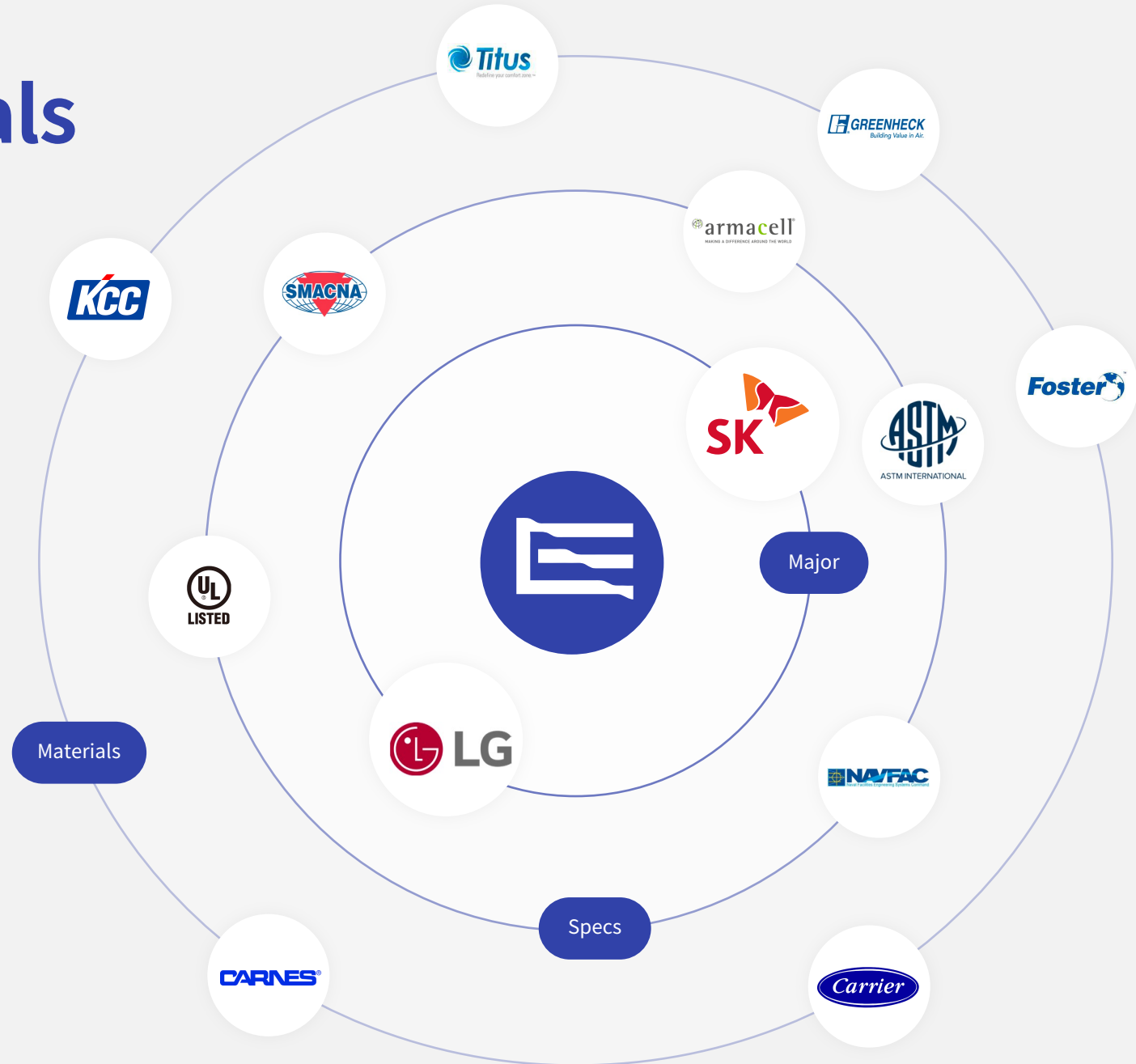
We understand the specs for the building's intended use and use only approved materials for construction.

**800+**

Trade Partners

**1500+**

Project



# Major Projects



SK BATTERY AMERICA PHASE



ROLLS-ROYCE CROSSPOINTE



LG HAUSYS



YANMAR TRAINING CENTER



MICRON



FEDEX

We begin with Until the day we succeed Won't you join us?

EPEC



# Contact Us

## HEADQUARTERS

T) 678-646-2001

3011 Sutton Gate Dr Suite 250 Suwanee GA 30024

## EPEC OFFICE

954 Army Drive, Barrigada Heights, Guam 96913

Mail : [Info@easternpacificec.com](mailto:Info@easternpacificec.com)